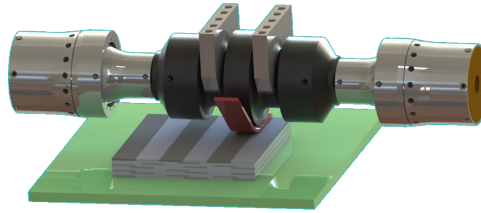
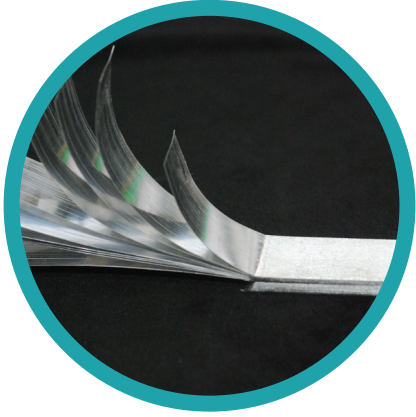


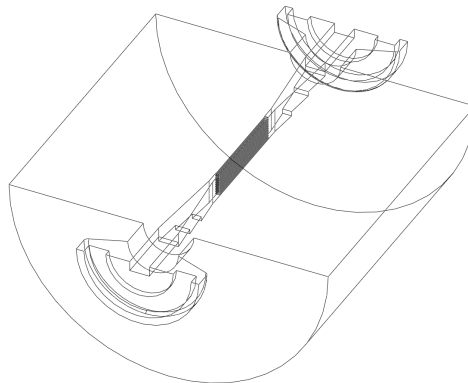
# Anatomy of a 3D Printed Heat Exchanger

## STEP 1: 3D Metal Printing



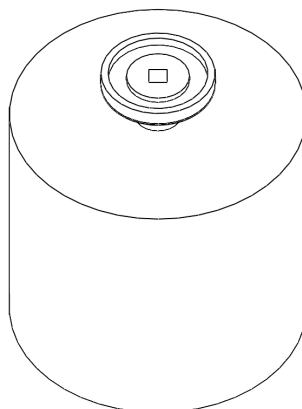
Metal foils (0.006"-0.010") are ultrasonically welded one layer at a time producing a 3D shape.

## STEP 2: Internal Geometry



The SonicLayer 7200 has integrated CNC allowing both additive and subtractive work. When needed, CNC mills are used to create internal geometry.

## STEP 3: Final Part



When the structure is printed to height, CNC mills are used to shape external features to print.

